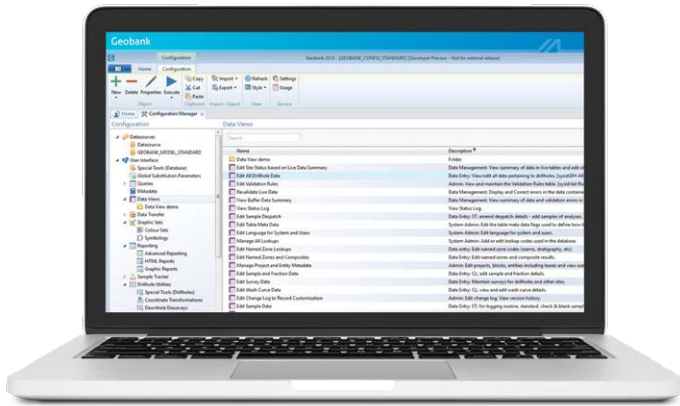


TECHNICAL  
ARTICLE

# Dealing with the complexity of Coal data with Geobank 2018



# Dealing with the complexity of Coal data with Geobank 2018



Geobank provides a secure and flexible data management system for mining and exploration companies.

The Geobank suite of products have been designed and built to ensure no matter how large the company is, or how diverse the geological resource, there is a solution available that fits each requirement.

This is never truer than in the delivery of solutions to the coal sector. Geobank can play a key role in the storage of coal quality data including the storage of beneficiation analytical data. The physical characteristics of the coal are recorded along with the results of processing the coal through various testing stages. This provides coal companies with the data repository needed to create coal wash and blend processing models.

Geobank for Coal can provide the below key benefits for coal mining companies:

- Data transfer tools (import/export)
- Data validation
- LAS files import functionality
- Customisable data entry views
- Depth adjustment tool
- Plan view
- Cross section views
- Customisable strip-log graphic reports
- Customisable advanced reporting environment

In our experience, coal presents many challenges when it comes to data analysis and data management. MICROMINE has identified this and developed dedicated tools to assist coal mining companies to ensure they are managing their coal data efficiently.



# Dealing with the complexity of Coal data with Geobank 2018

## Data Transfer

Geobank provides flexible data transfer objects to ensure key mining data is efficiently transferred from the field to the office thus reducing data loss and increasing data quality.

Flexible Import and Export functionality allows data exchange between Geobank and common file formats, including direct import from Excel documents (XLS, XLSX) to database tables, along with the validation and correction of data.

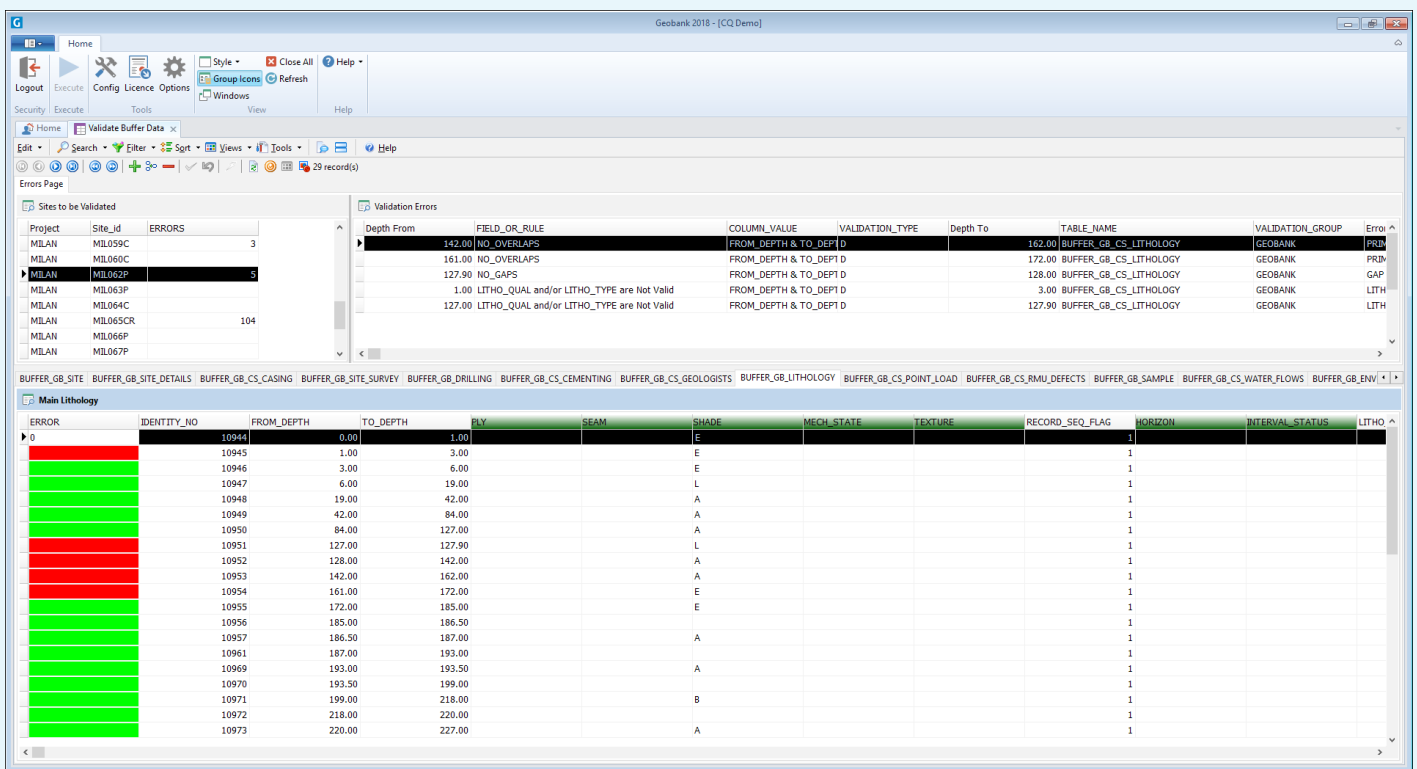
Import formats supported:	Export:
CSV	CSV
Tab Delimited	Tab Delimited
Free Format Text	Free Format Text
Fixed Format Text	Fixed Format Text
MICROMINE Dat File	MICROMINE Dat File
Laboratory Sif File	Database Via SQL Command
Excel	
LAS	

## Validation

Geobank includes powerful validation tools to ensure accurate and reliable data.

Geobank loads raw data into a staging area where users can correct validation errors within the software, rather than externally. This ensures that data is centralised, unique and secure. It also promotes the concept of a single source of truth for this strategic asset.

Fully configurable data validation rules allow the cross-referencing of project information and the automated checking of core data, assay information and surveyed collar details.

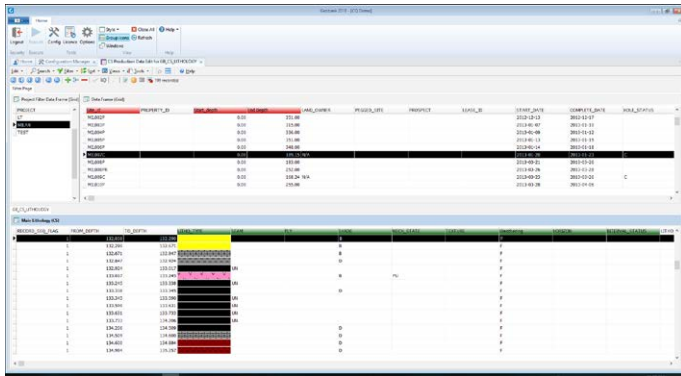


Validation View in Geobank 2018

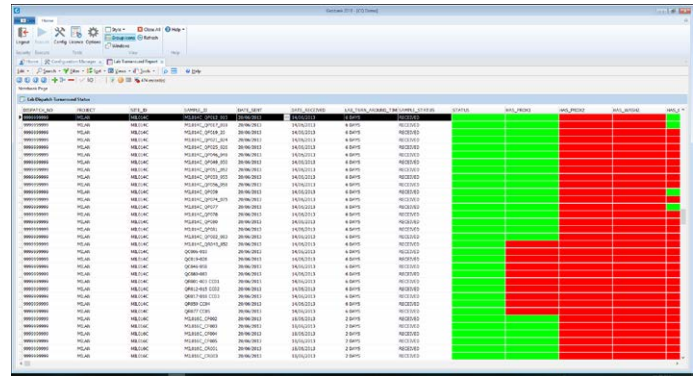
# Dealing with the complexity of Coal data with Geobank 2018

## Data Views

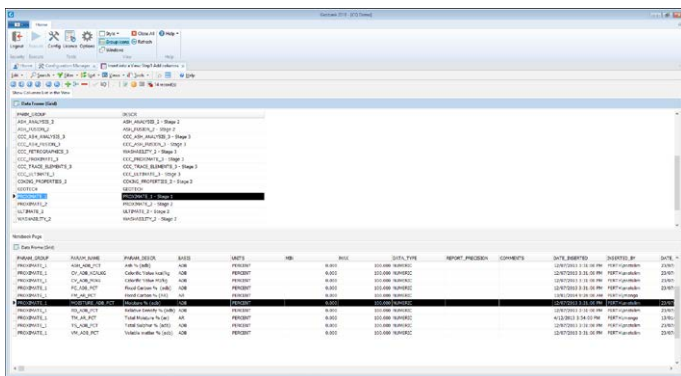
Customised Data Views provide a user interface for data browsing, data entry and validation, which display relational data concisely using a 'tiled' notebook interface. Geobank offers configurable data views which can be used for database administration, validation, data entry or reporting.



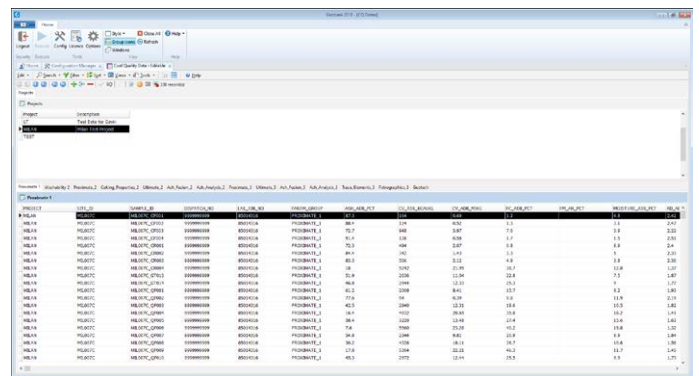
Coal Log Lithology Logging Sheet



Lab Turnaround Report View



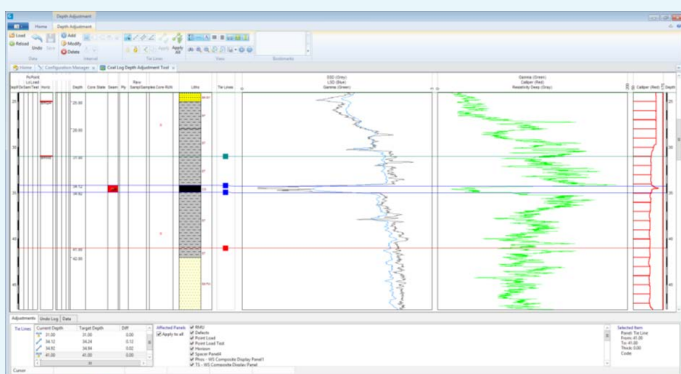
Coal Quality Parameter Management



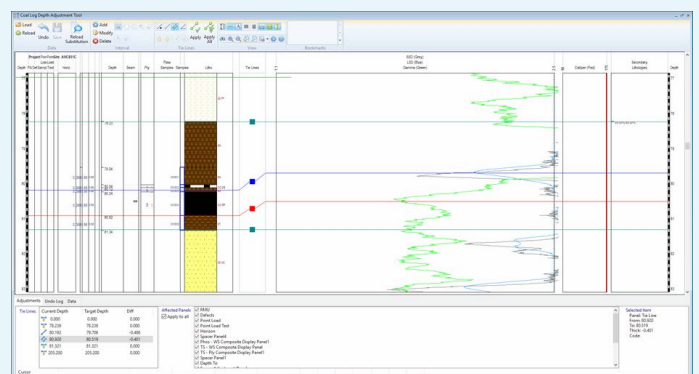
Coal Quality Data Visualisation

## Depth Adjustment Tool

Geobank has a customisable depth adjustment tool. This tool allows users to display lithological, sampling, and geotechnical data side-by-side in an adjustable (source) and non-adjustable (reference) panels allowing users to easily depth correct the geological logs to the geophysical logs. Records can also be inserted interactively.

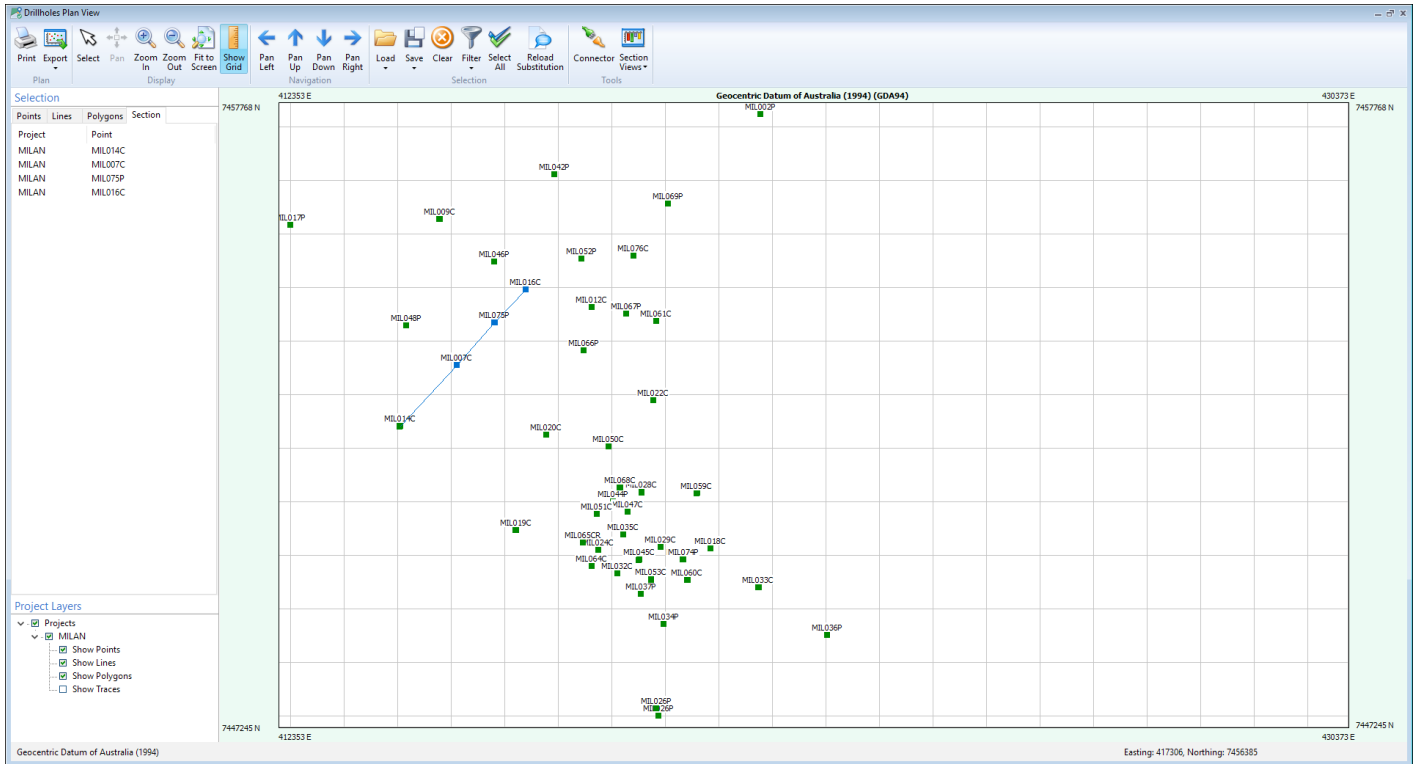


Depth Adjustment tool in Geobank

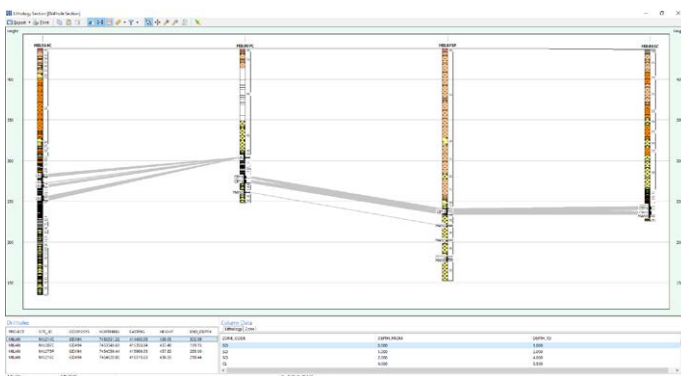


## Planview & Cross Section Tool

The Geobank cross section tool allows the user to select the end points of a section in a plan view. The software then generates a correlated cross section diagram. Users can also individually colour seam correlations in cross sections.



Planview with section selection



Cross section view

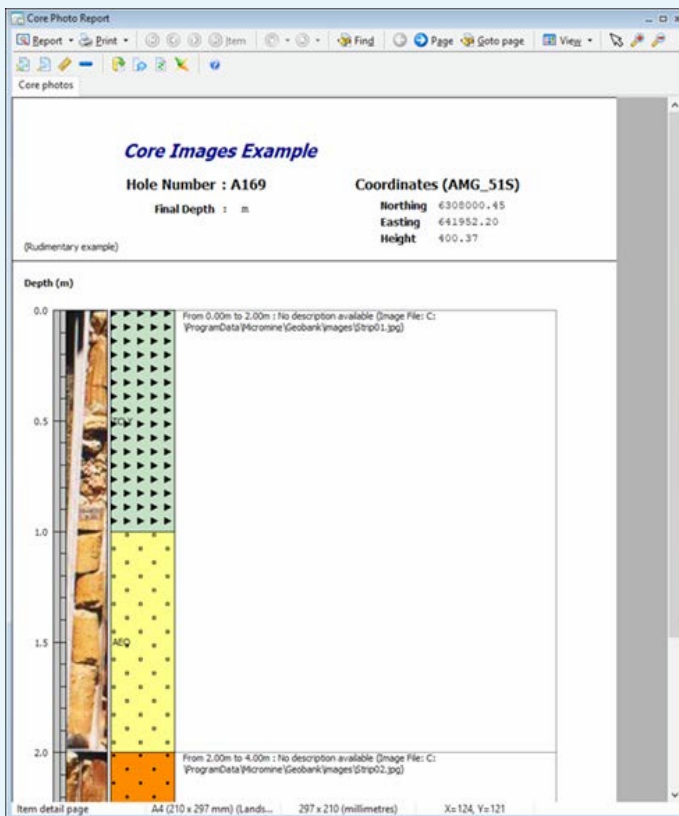


## Graphical Log Reports

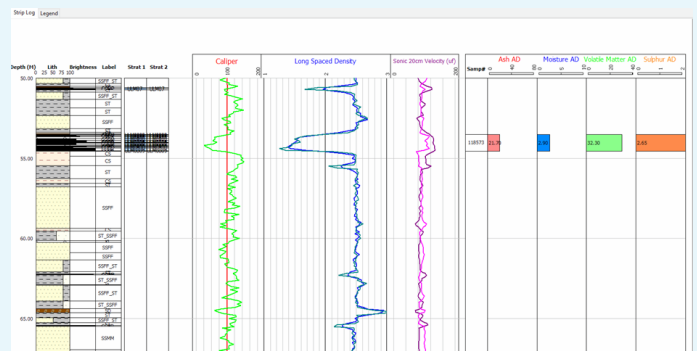
Sophisticated Graphic Reports are another feature in Geobank for displaying and sharing information stored in the database. It provides visual representations of geotechnical, hydrological, geological and geophysical data, ranging from simple text summaries to highly complex composite graphical reports.

Geobank 2018 includes numerous features to improve the user experience when designing or editing Graphic Reports. Options such as the Design Grid, Sub-Reports and the ability to see and manage dependencies between objects significantly reduces the design time needed to create reports.

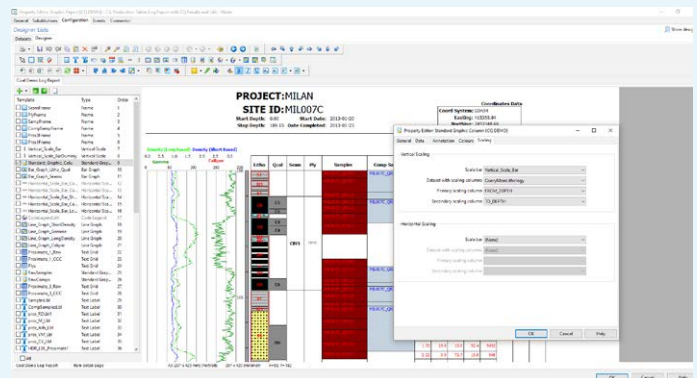
The new Sub-Report feature also allows Geobank users to easily batch plot multiple drillholes in one go.



Core Photo Report



Downhole Geology with LAS and Coal Quality Results



Graphic Report Designer Environment

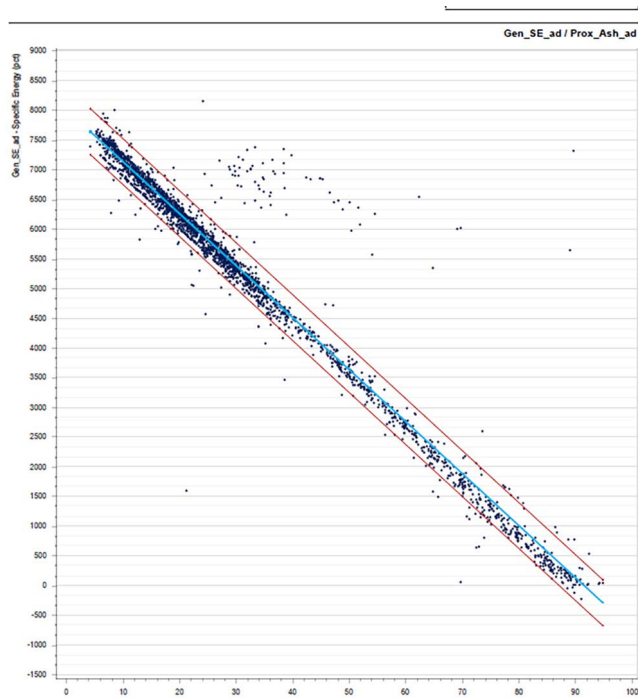
# Dealing with the complexity of Coal data with Geobank 2018

## Advanced Reports

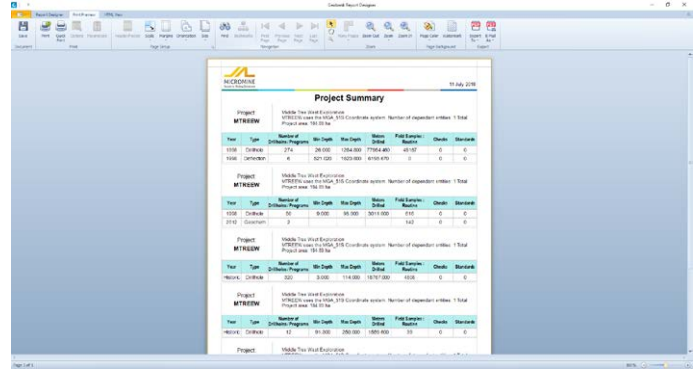
Geobank’s Advanced Reporting module allows the user to configure, store and run complex reports tailored to their exact requirements. Reports can be generated in a wide range of formats, including PDF, HTML, RTF, XLS and CSV.

Customisation tools in the Advanced Reporting module allows users to build reports quickly and easily.

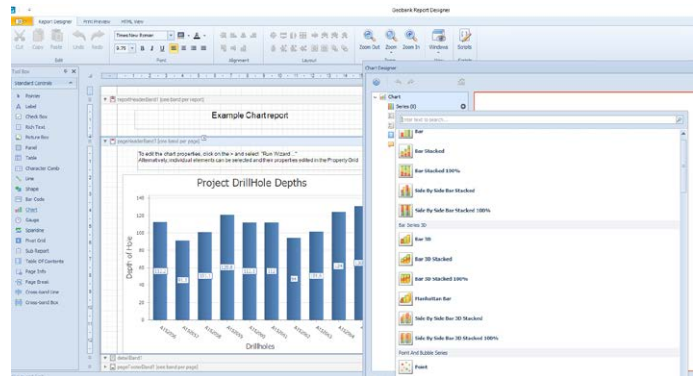
The Advanced Reports modules allows the creation of corporate style reporting which allows to create cover pages, table of contents, Sub-Reports, charts, images and barcodes.



Coal Quality Correlation Reports



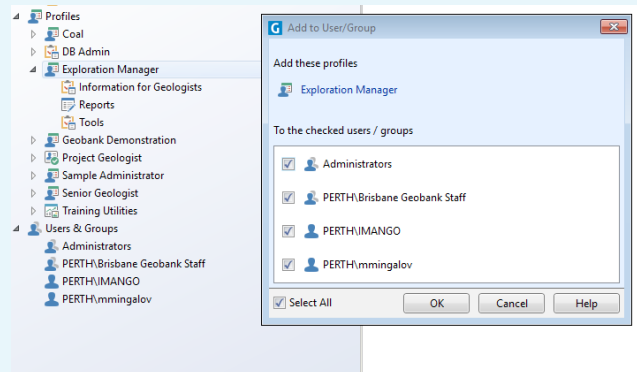
Project Summary Report



Advanced Reports Designer Environment

## User & Profile Management

Users and Groups can be allocated to specific Profiles which dictates specific workflows and roles defined by the Administrator.



Profile and User Management in Geobank



**micromine.com**

MICROMINE Corporate  
 174 Hampden Road  
 Nedlands WA 6009 Australia  
 T: +61 8 9423 9000  
 E: [marketing@micromine.com](mailto:marketing@micromine.com)

MICROMINE Africa	+27 87 150 7580
MICROMINE Brazil	+55 31 3347 5904
MICROMINE Canada	+1 604 646 8924
MICROMINE Central Asia	+7 727 349 39 94
MICROMINE China	+86 138 1145 5806
MICROMINE Ghana	+233 302 764 657
MICROMINE Indonesia	+62 21 7590 5333
MICROMINE LATAM	+51 1 707 3858
MICROMINE Mongolia	+976 70113889
MICROMINE Russia	+7 495 665 46 55
MICROMINE Turkey	+90 312 241 5571
MICROMINE United Kingdom	+44 203 176 0080
MICROMINE USA	+1 303 996 6270
MICROMINE Uzbekistan	+9 989 711 404 164

<a href="mailto:mmafrica@micromine.com">mmafrica@micromine.com</a>
<a href="mailto:mmbrazil@micromine.com">mmbrazil@micromine.com</a>
<a href="mailto:mmcanada@micromine.com">mmcanada@micromine.com</a>
<a href="mailto:mmkz@micromine.com">mmkz@micromine.com</a>
<a href="mailto:mmchina@micromine.com">mmchina@micromine.com</a>
<a href="mailto:info@act-ict.com">info@act-ict.com</a>
<a href="mailto:mmindonesia@micromine.com">mmindonesia@micromine.com</a>
<a href="mailto:mmlatam@micromine.com">mmlatam@micromine.com</a>
<a href="mailto:mmmongolia@micromine.com">mmmongolia@micromine.com</a>
<a href="mailto:mmrussia@micromine.com">mmrussia@micromine.com</a>
<a href="mailto:gesiyok@micromine.com">gesiyok@micromine.com</a>
<a href="mailto:mmuk@micromine.com">mmuk@micromine.com</a>
<a href="mailto:mmusa@micromine.com">mmusa@micromine.com</a>
<a href="mailto:mmuz@micromine.com">mmuz@micromine.com</a>